

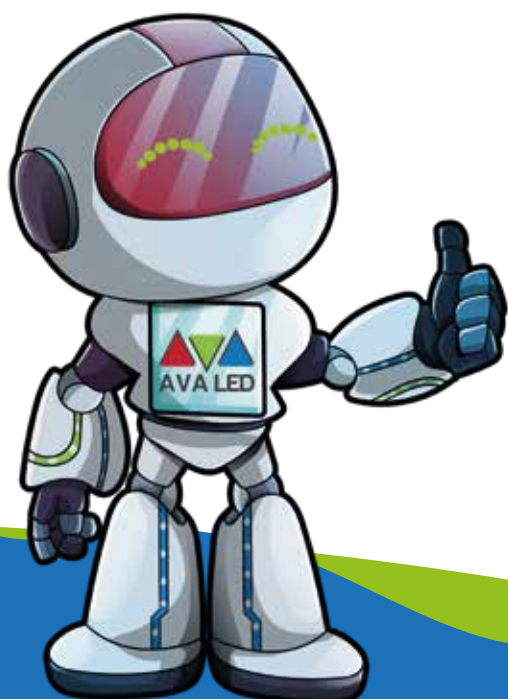


# AVA LED

## TN-PRO-IF-2

### Data Sheet

QUALITY IN DETAIL



### INDOOR FRONT SERVICE SERIES

TN-PRO-IF-2 I  
TN-PRO-IF-2 PRO | TN-PRO-IF-2 PLUS





TITLE OF CONTENTS

02-04	○	Features
05	○	Technical Specification
06 - 08	○	Cabinet Size - Photo
09 - 10	○	Safety - Instalation
11 - 12	○	Vision
13	○	Company Info

- Advanced Contrast Brightness Black technology,
- Advanced High Refresh Rate,
- Fast installation of panel to Light Frame,
- Just Signal person to install/uninstall, saving labor cost
- Die-Casting Aluminum-Magnesium frame design, fanless design.
- No noise, lower power consumption, good heat dissipation.

## TN-PRO-IF-2

- Standart Refresh Rate: 1920Hz
- C Class Led Chip
- Standart PCB Quality
- High Quality MASK
- Rotation 90 Degree

## TN-PRO-IF-2 PRO

- High Refresh Rate: 3840Hz
- B Class Led Chip
- High Quality PCB
- High Quality MASK
- Rotation 90 Degree

## TN-PRO-IF-2 PLUS

- High Refresh Rate: 3840Hz
- A Class Led Chip
- Best Quality PCB
- Best Quality MASK
- High end Refresh Rate
- 18 Bit
- Clear View
- Free Rotation
- HDR
- 4K Refresh Rate



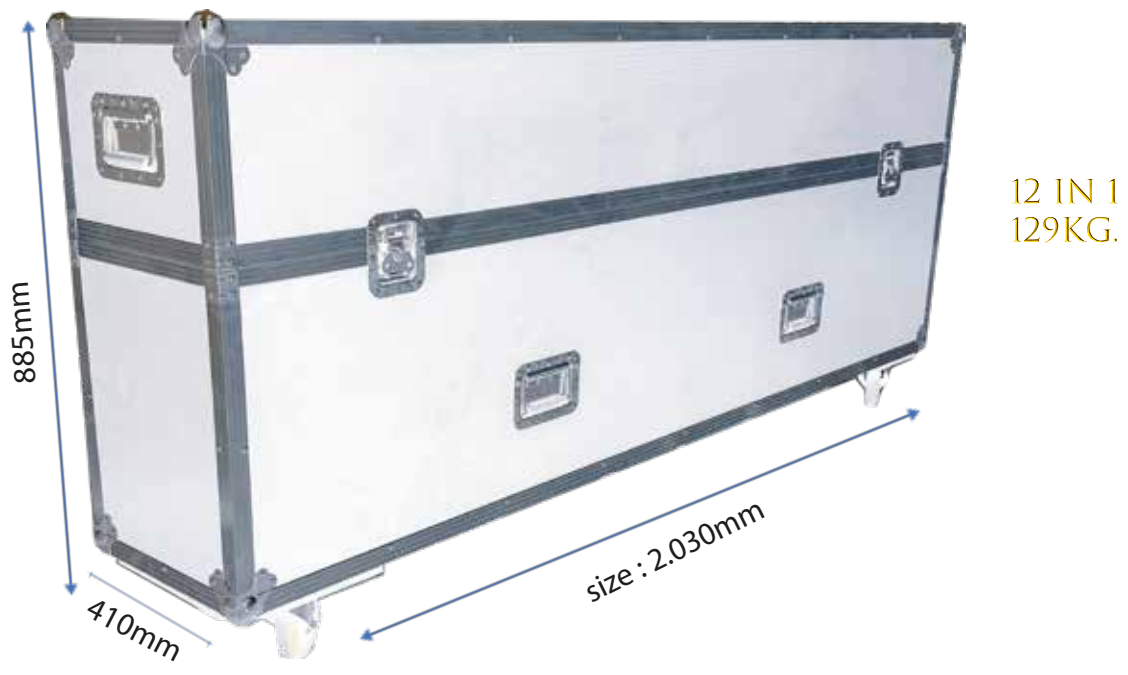
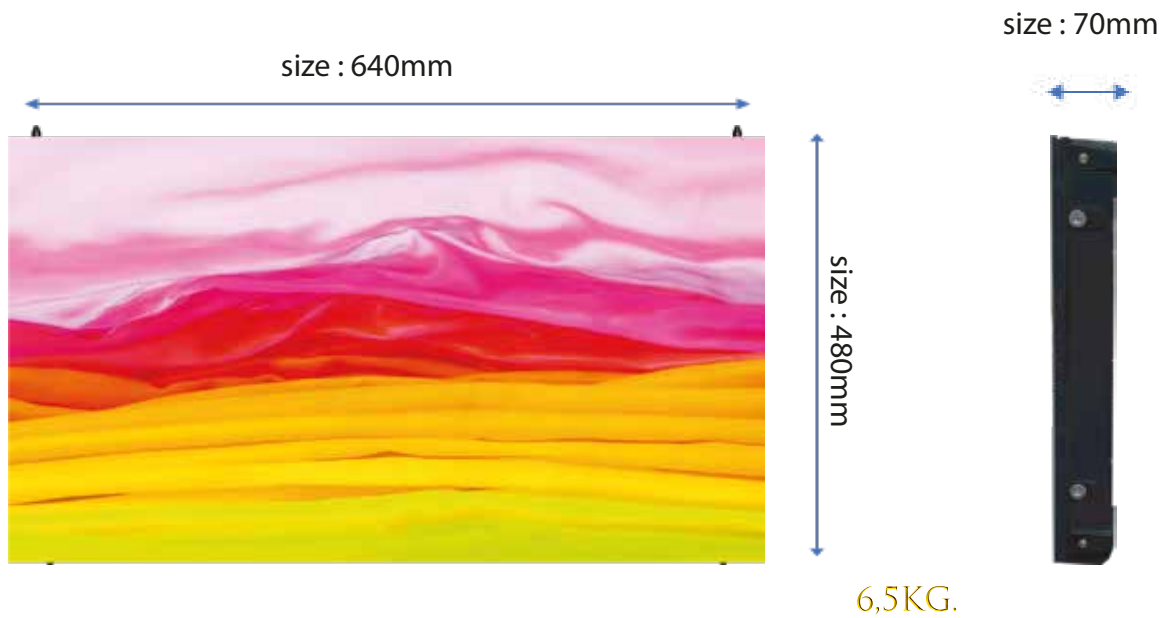
## Features

- \*\*\* FRONT SERVICE
- \*\*\* Light Weight
- \*\*\* Magnesium Die-Casting
- \*\*\* 3 in 1 Case weight with products: 129kg.
- \*\*\* Faster Cooling
- \*\*\* Advanced and safety Lock
- \*\*\* Nova Star Controller
- \*\*\* SPACE BLACK

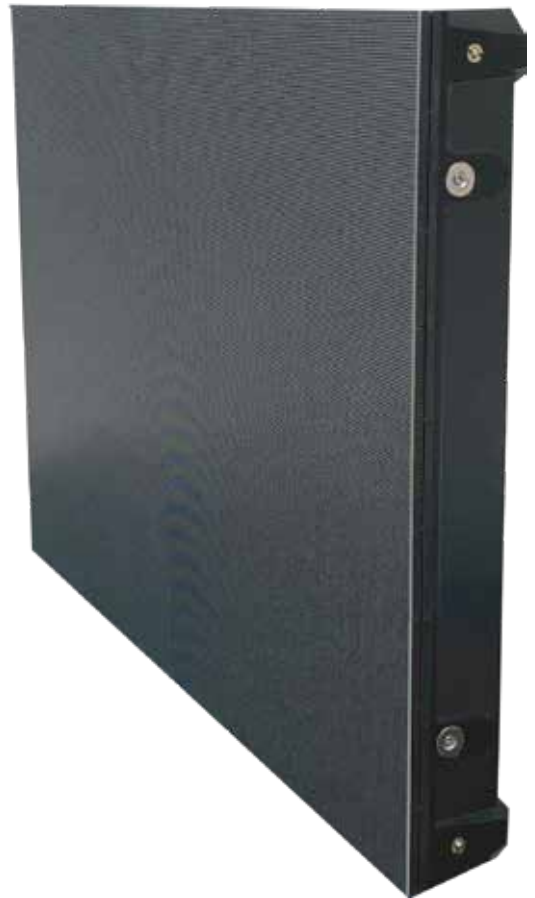
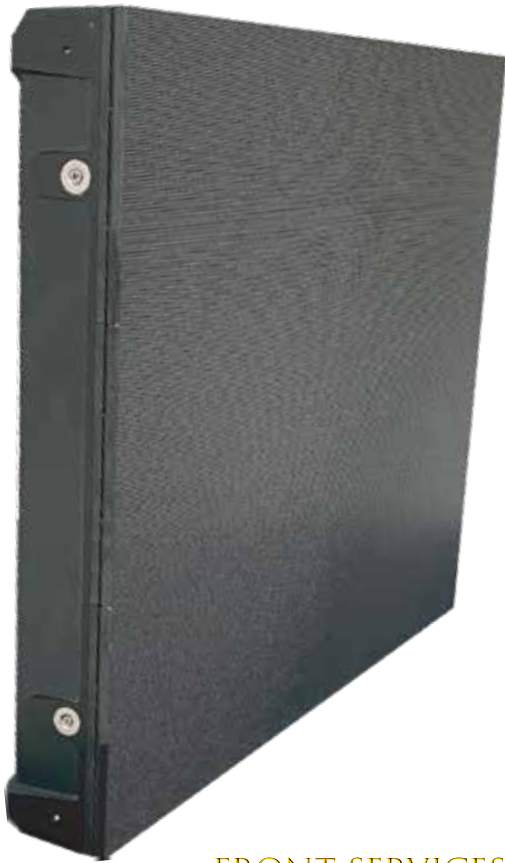
MODEL NAME Version	TN-PRO-IF 2	TN-PRO-IF 2 PRO	TN-PRO-IF 2 PLUS
Pixel Pitch	2mm	2mm	2mm
Pixel Configuration	SMD 1515	SMD 1515	SMD 1515
LED	Space Black	Space Black	Space Black
Processing	16 Bit	16 Bit	-
Processing	-	-	18 Bit
Pixel Density / m2	250000	250000	250000
Resolution/SQM	500 x 500	500 x 500	500 x 500
Cabinet Resolution 640x480	320 x 240	320 x 240	320 x 240
Pixel Density / Cabinet	76800	76800	76800
Module Size (mm)	320x160	320x160	320x160
Cabinet Size (mm)	640 x 480 x 70	640 x 480 x 70	640 x 480 x 70
Module Per Cabinet	6 MODULE	6 MODULE	6 MODULE
Module Resolution	160 x 80	160 x 80	160 x 80
Weight Per Panel Net kg. 640x480mm	6,5	6,5	6,5
Rotation per 90 Degree	✓	✓	✓
Free Rotation (with R5)	○	○	✓
Mapping	✓	✓	✓
Clear View	○	○	✓
Low Latency	○	○	✓
HDR	○	○	✓
Power Consumption (<w/sqm)	450	450	450
Average Power Consumption (<w/sqm)	135	135	135
Driving Method	1/40	1/40	1/40
Brightness	>800 Nits	>800 Nits	>800 Nits
Refresh Rate	>1920Hz	-	-
Refresh Rate High Refresh	-	>3840Hz	>3840Hz
Refresh Quality	Standar	High Quality	Best Quality
High Refresh (PLL inside)	-	-	✓
High Refresh Power Saving	-	✓	✓
High Refresh Dynamic Power Saving	-	-	✓
Driving IC Type	Ordinary	PWM	PWM
Refrate Quality 2	Standar	High Refresh	4K Refresh Rate
No Waterless Ripple of Camera	>%50	>%75	>%90
Cabinet Material	Die-Casting Aliminum	Die-Casting Aliminum	Die-Casting Aliminum
Horizontal Viewing Angle	140 (±30)	140 (±30)	140 (±30)
Vertical Viewing Angle	140 (±30)	140 (±30)	140 (±30)
Expected LED Lifetime %50	100,000 Hours	100,000 Hours	100,000 Hours
IP Rating	IP20	IP20	IP20
PCB Quality	Best Quality	Best Quality	Best Quality
Module - Mask Quality	Best Quality	Best Quality	Standart
LED Chip	Class C	Class B	Class A
Picture / Video Quality	Standart	High Quality	Best Quality
Grey Scale	65536	65536	262144
Control Systems	Nova Star	Nova Star	Nova Star
Operating Temperature Range	-20 – +60 (±10)	-20 – +60 (±10)	-20 – +60 (±10)
Operating Humidity Range	-40°C~+60°C,10%-90%RH	-40°C~+60°C,10%-90%RH	-40°C~+60°C,10%-90%RH
Voltage Range	200 ~240VAC	200 ~240VAC	200 ~240VAC
Packing include	Plate-Power-Cat5 Cable	Plate-Power-Cat5 Cable	Plate-Power-Cat5 Cable
Certificate	CE/EMC/LVD-ATR- EUR1 ISO-9001:2015 ISO-14001:2015	CE/EMC/LVD-ATR- EUR1 ISO-9001:2015 ISO-14001:2015	CE/EMC/LVD-ATR- EUR1 ISO-9001:2015 ISO-14001:2015

The data written in the catalog may differ by + - 10%

CABINET SIZE



PRODUCT PHOTO

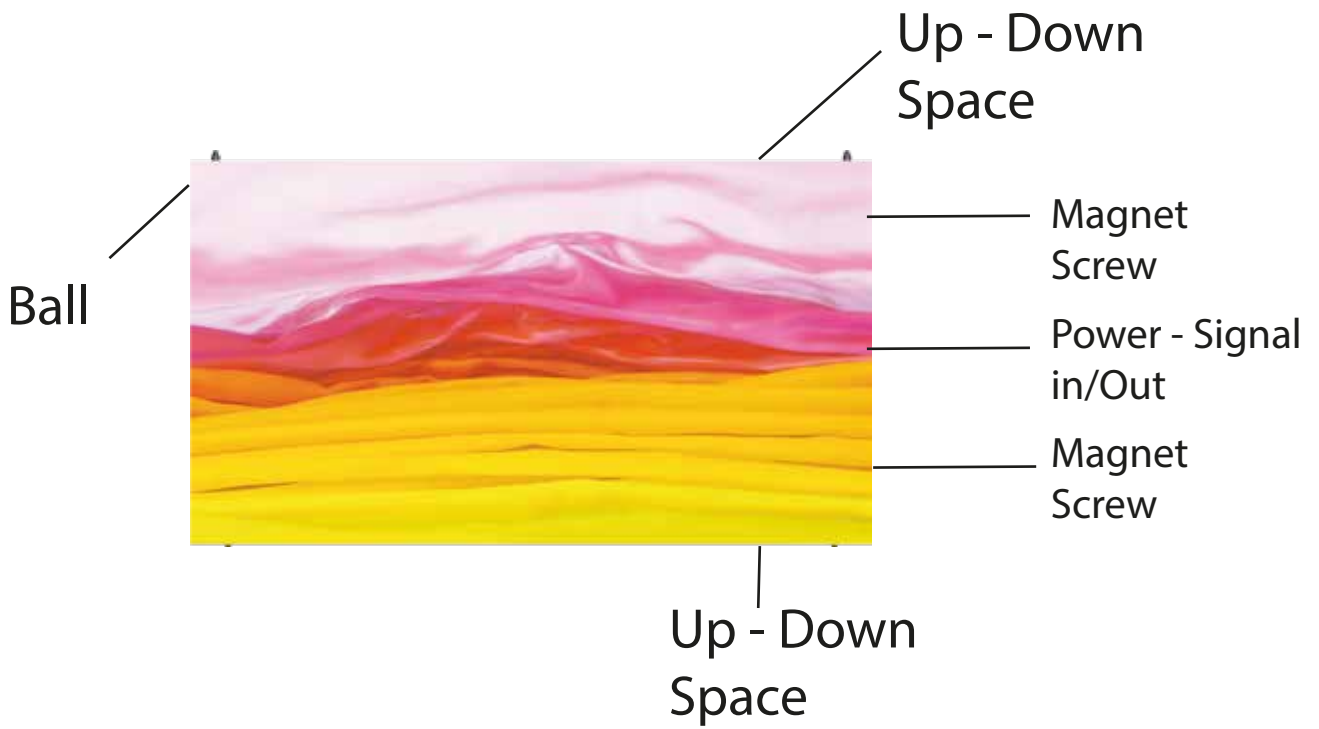


FRONT SERVICES



QUALITY IN DETAIL

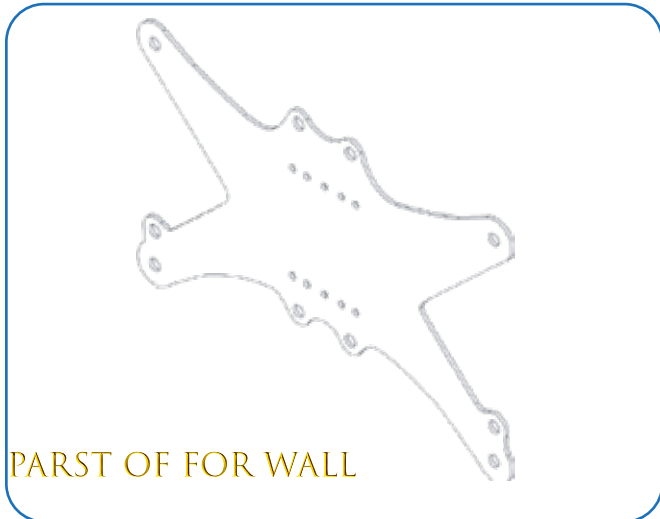
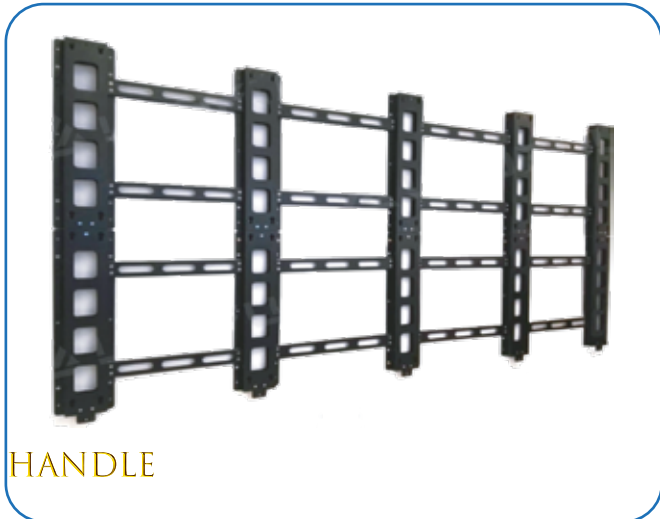




### Ultra High Definition

It delivers a truly amazing picture with extraordinary pixels producing an image that is HD quality in an LED Screen. ipsum





The support structure has to be provided and installed by the customer because they vary from project to project. The following issues must be considered:

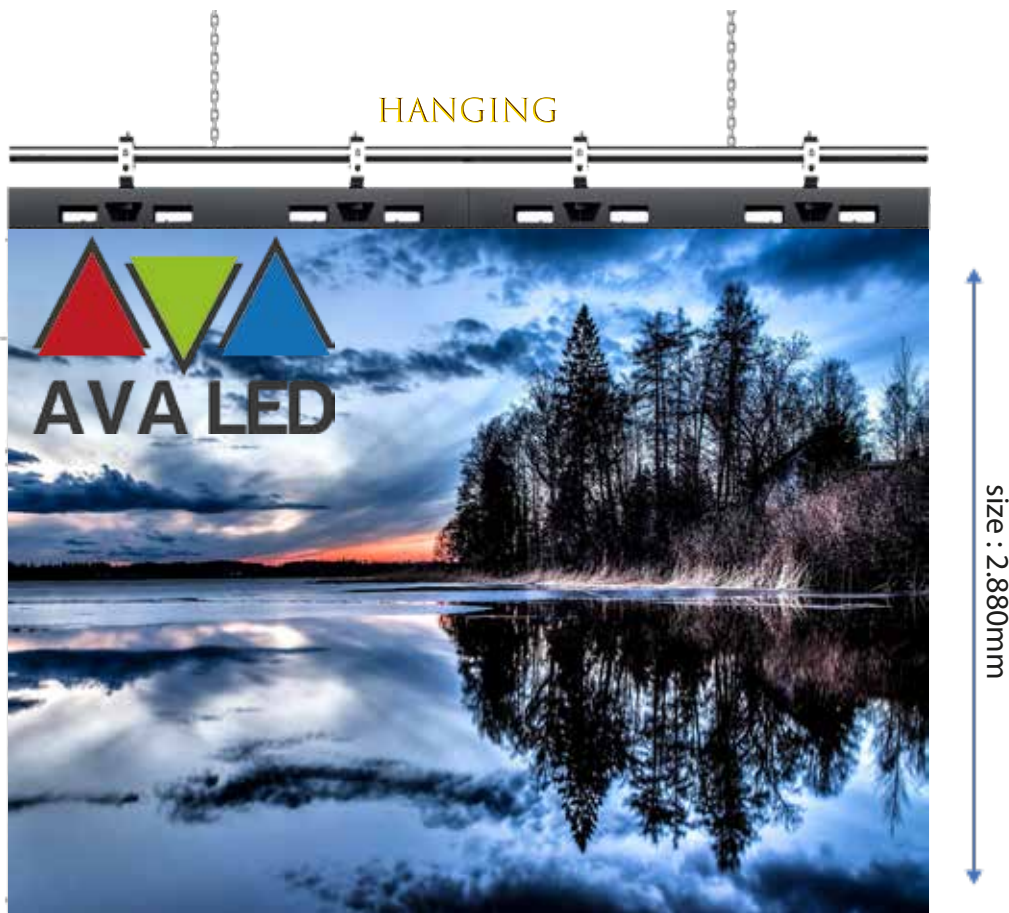
**Weight tolerances:** Ensure that the support structure and the floor on which or the wall against which the support structure has to be installed, is qualified to handle the complete weight of the LED display screen.(which can be provided by manufacturer.

**Environmental conditions:** Humidity, wind, temperatures, rain, snow etc.

**Location:** Outdoor/.Indoor, altitude, etc. Usually, for outdoor display screen, the customer should build top cover and side cover for IP protection (Including waterproof and dustproof)

**Ground stability**

**Front clearances:** For making sure there is sufficient free area in front of the LED display screen and respect the maximum viewing angles and distance. Local regulations regarding such installation.



### ULTRA WIDE VIEWING ANGLE



Both 160° from horizontal & vertical for the viewing angle.  
Seeing from five directions, it would be still the natural and clear image in an LED display.

### ULTRA FAST RESPONSE



Perfect Rendering Dynamic Picture

Response speed



Smear Ghosting Phenomenon

### 18 BIT GREY SCALE

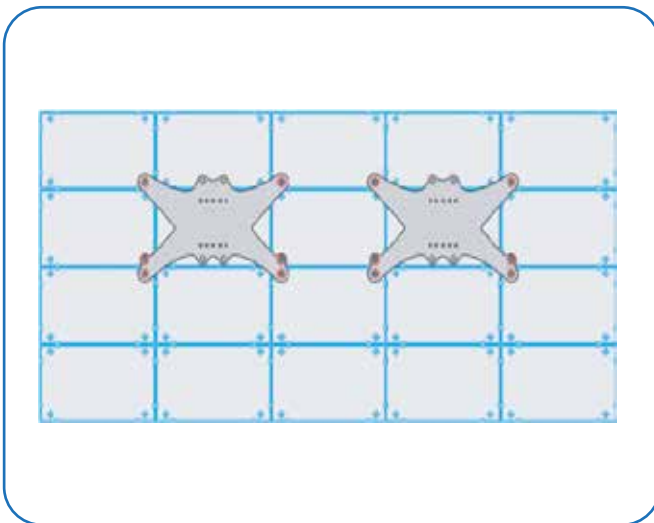


AVA LED



Others







# AVA LED

[www.avaledscreen.com](http://www.avaledscreen.com)

[info@avaledscreen.com](mailto:info@avaledscreen.com)

AVA GROUP GMBH

Adress: Goethestraße 7D - 40237 Düsseldorf / Germany

Phone : +49 211 730 64 817

